





**Our destiny is to connect paths
towards a new mobility.**



VALUE OFFER

Modular and complete solution.



Our technology connects data, cities, people, and generates results.

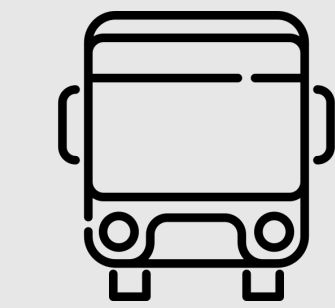
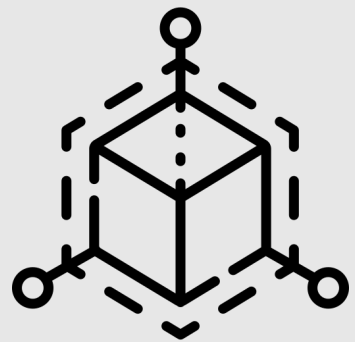
The evolution of transportation management involves the use of integrated technologies that boost mobility with improved operational efficiency, strategies to attract passengers, and data to support decisions.

Our ITS solution creates a complete ecosystem that promotes intermodal transportation with a variety of payment methods and connected services.



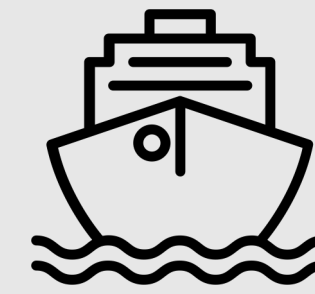
Scalable and flexible solutions for different systems.

Full integration between different platforms, solutions, on-board devices, and even modes of transportation.



SHUTTLES
SCHOOL BUSES

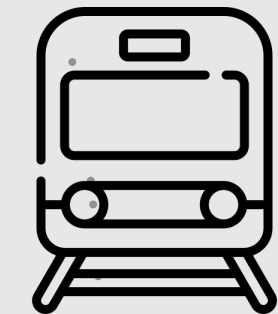
PRIVATE
TRANSPORTATION



URBAN
MASS TRANSIT



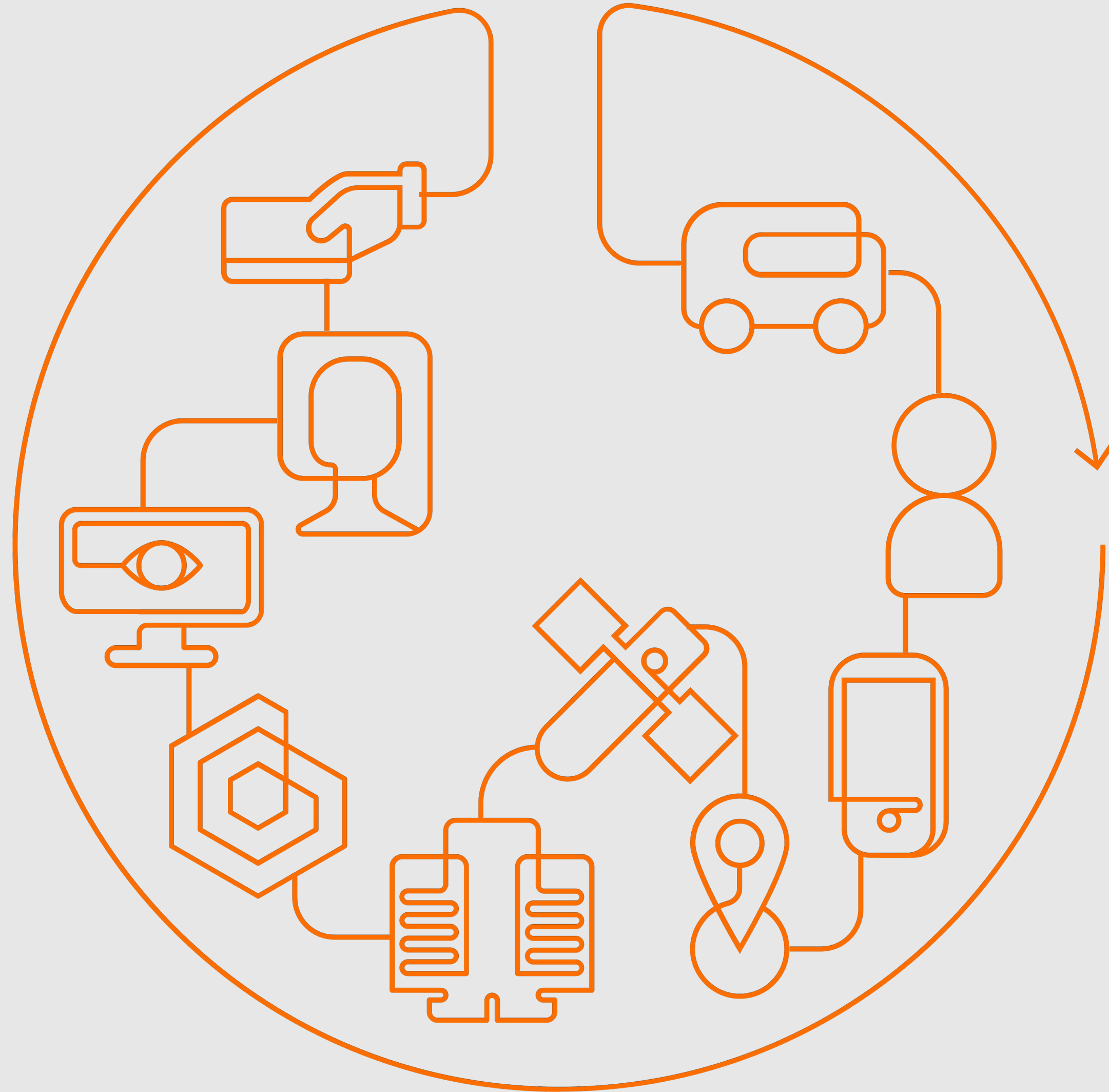
INTER-CITY
MASS TRANSIT



INTERSTATE
MASS TRANSIT

PUBLIC
TRANSPORTATION

PERIMETER



Integrated and complete technologies.

Smart solutions to promote a new mobility.



Electronic ticketing system and access control.

Smart billing: the scale of traditional billing with the convenience of modern methods.

Versatility and innovation work together to promote a smart bill collection and access control system.

Complex transportation networks require sophisticated billing methods: offer discounts based on time of the day, day of the week, and transfers. Everything can be easily configured in the ticketing management software.

Our solution is modular so that the system operator can select what to offer.

Multi-method payment

- . **Transport app billing**
- . **Cards (Mifare, Cipurse[®], EMV)**
- . **NFC or contactless**
- . **QR Code**

Expanded sales network

- . **Credits to partners and systems**

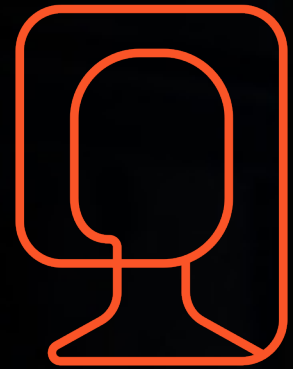


Operational control and telemetry

Intelligent Transport System (ITS) technologies have come a long way in the past decade. But the integration between different on-board devices and numerous software has become a huge challenge for operators. We took upon this challenge and created a modular yet comprehensive system.

All the technology you need to manage operation and choose the services you want the fleet to offer.

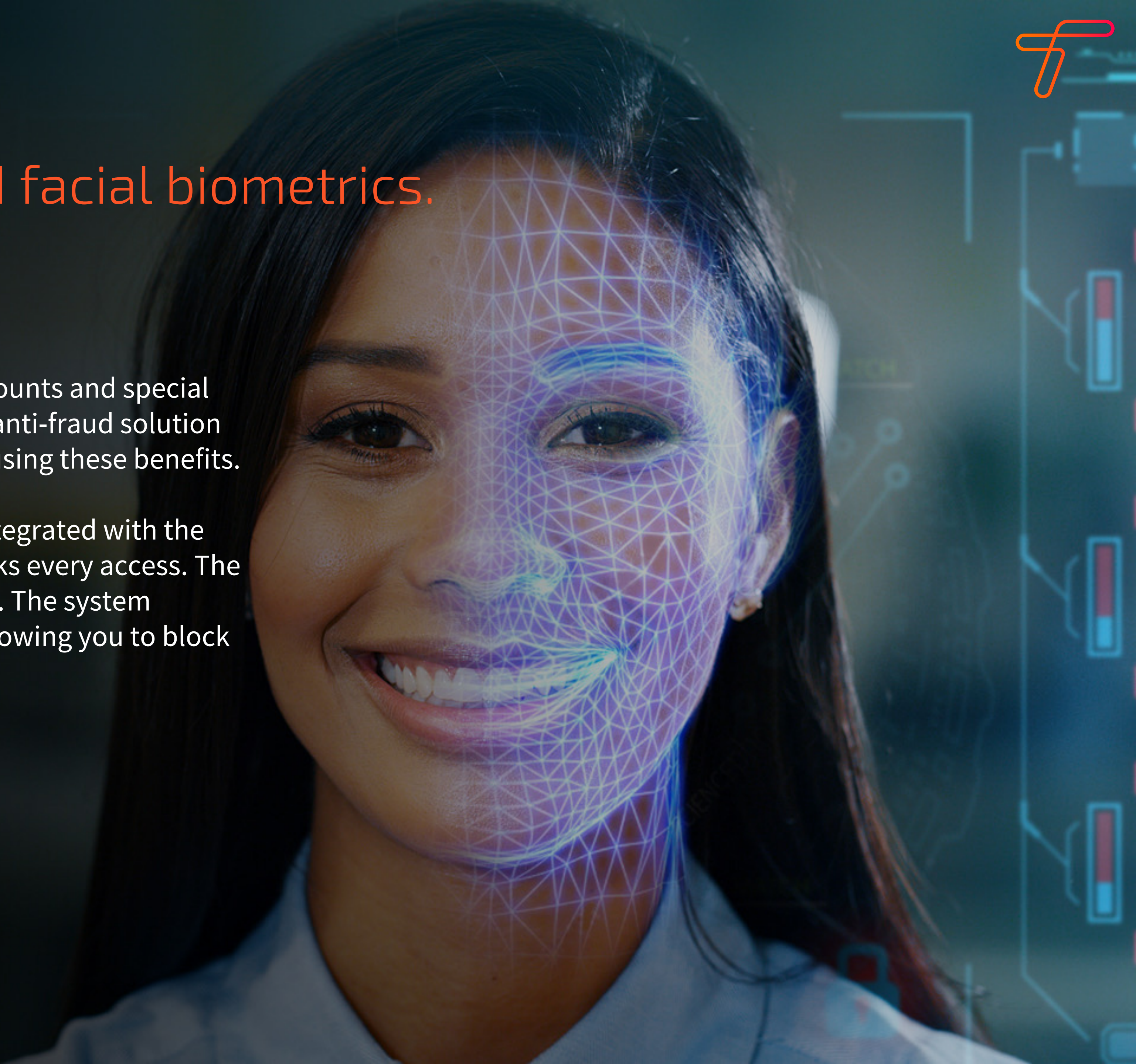
All-in-one devices: The functionality of a validator with the operational benefits of an on-board computer. And it's even more extensive when connected to the driver's communication console.

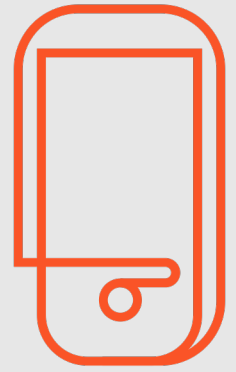


Video monitoring and facial biometrics.

Passengers can be offered individual discounts and special payment options. Facial Biometrics is an anti-fraud solution that prevents unauthorized people from using these benefits.

The Facial Biometrics camera, which is integrated with the validator, quickly and automatically checks every access. The images are compared to the user's profile. The system generates a list of suspicious accesses, allowing you to block cards that have been used incorrectly.





On-board equipment (validators and accessories).

A public transportation system can implement a fare policy that provides discount or unique prices to different types of passengers. If an exclusive transportation card or pass is personal and non-transferable, the system must ensure that no one else can use that pass. Frauds regarding the use of benefits reflect negatively in a mass transport system, either by withholding funds to public coffers, when there are direct subsidies, or by damaging operators, when there are no subsidies or transfer of tariffs.

Facial recognition technology, in integration with the validator, checks automatically and efficiently every access made to a transport system. These images, after the end of daily operations, are automatically transferred to a server and are then compared to the images of users stored in the registry. An automatic biometric analysis is made based on the bone structure of the face. After that comparison, the system generates a list that displays when there's been a mismatch between the owner and the actual user of the card and allows the operator to block cards that have been used irregularly.

Versatile Validators

All your solutions in one place.

Multi-method payments - interoperable

- . EMV, Cipurse®, Mifare cards
- . QR Code
- . NFC or contactless
- . Transport app billing

Operational control and telemetry

- . Tracking data and telemetry
- . Real-time updates on operational information

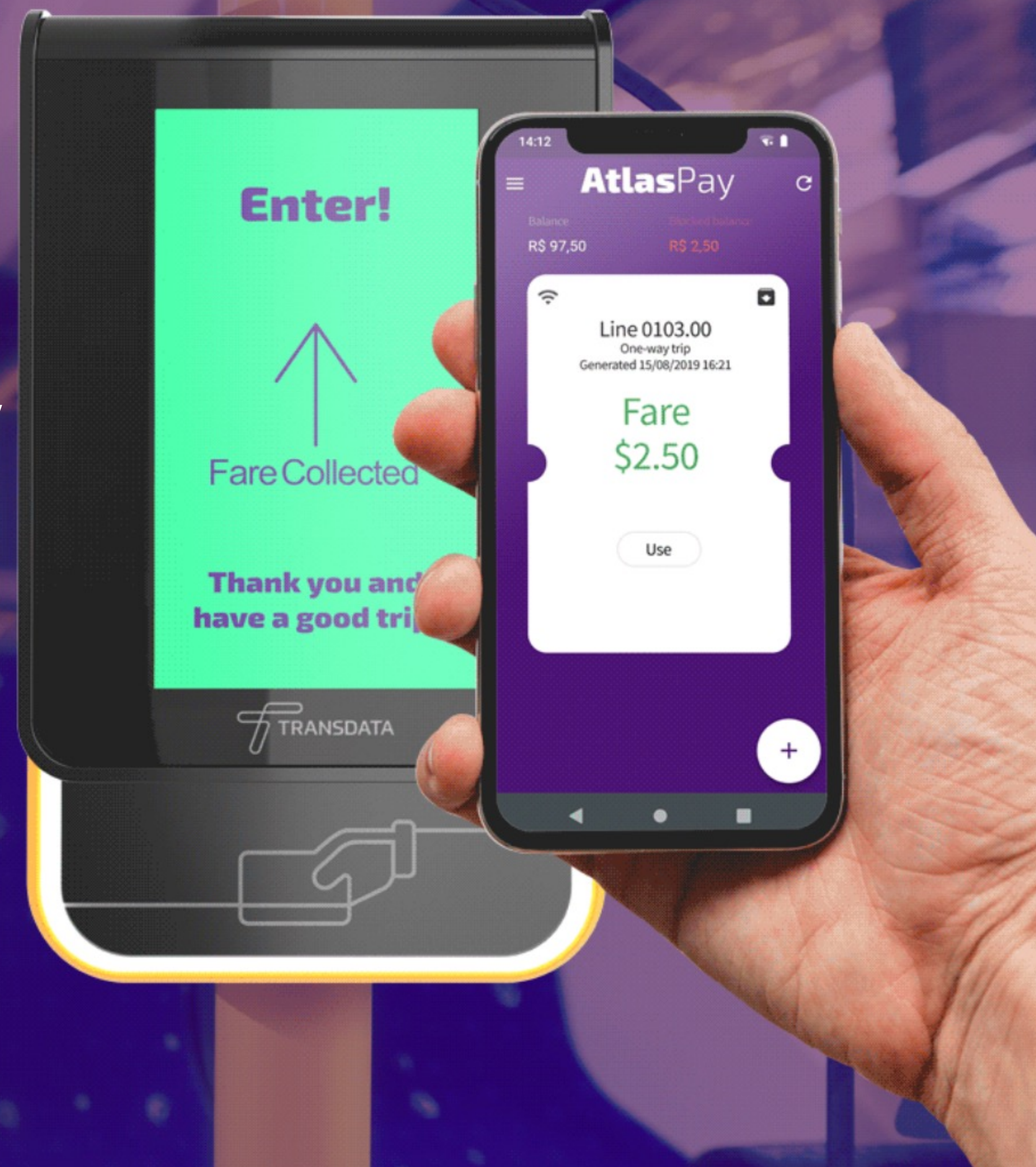
Video monitoring

- . CFTV and Facial Biometrics: captures, records and transmits images

Resistant and modern design

- . Reinforced body - **BOSCH®** technology
- . Water and dirt protection
- . Tamper-proof protection
- . Touch Screen Display
- . 3G e 4G
- . Plug and Play

Combines the functions of five different devices into one: all in one.





RF5 CAMERA



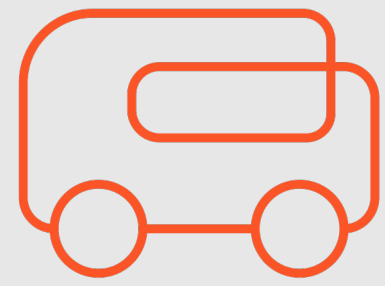
COLLECTOR



ATLASTRIP MONITOR



POS



BusPlus:

better performance in the management and sales of bus tickets.

This smart and easy to implement technology with web-based sales, e-ticketing, and customizable and unique features provides travelers with a convenient and queue-free sales experience.

Take innovation and convenience to bus travel.

Online sales

Online system links to other sales channels and supports online transactions through cellphones and other POS.

Dynamic fares

Your rules: the smart flexible fare feature works with your operation's reality and needs.

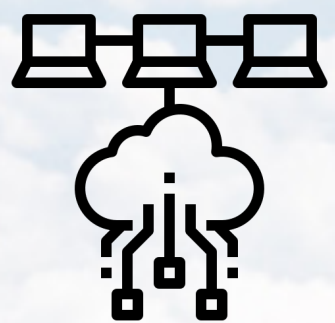
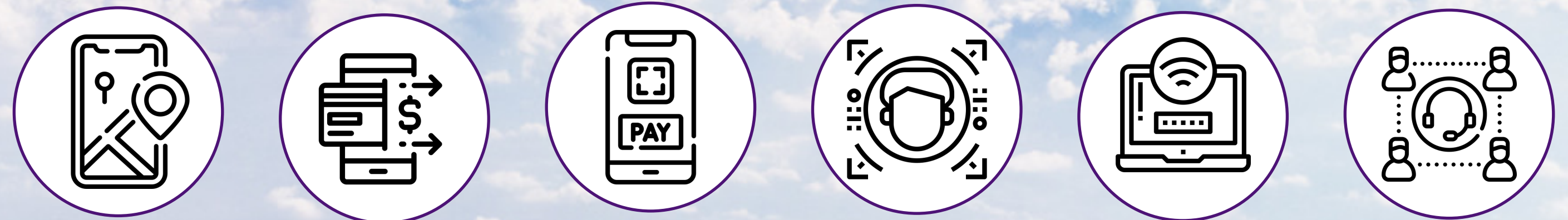
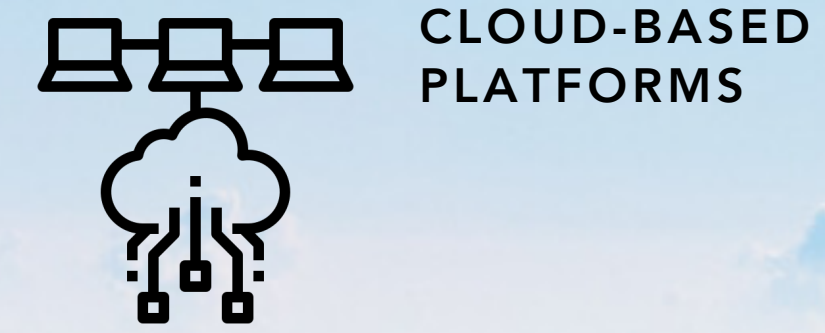
Loyalty (CRM)

Monitor customer habits, create and activate both offers and rewards based on client profile.



Regardless of the transport segment or solution package, our entire system is cloud-based, promoting total hardware autonomy and SaaS.

Transdata is responsible for the structure that's needed to operate our custom-based system, and the client uses the software through the internet, paying only for the service.





#WEARETRANSDATA

We connect our experience to your demands

+25 years

of experience

+600

projects

30 million

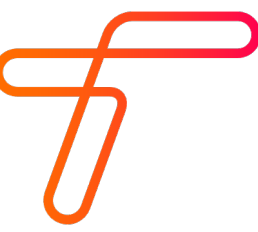
transactions/day

+25,000

buses in operation

+68,000

devices produced





To create innovative solutions for mass transportation is what drives us.

Human mobility is one of the greatest challenges in modern times. In increasingly challenging scenarios, it is technology that promotes transformation and more modern, attractive, and accurate operational management.





**Wherever
there's
innovation,
Transdata is
there.**

Our experience and operation intelligence has taken us everywhere. We collaborate with transport companies of all sizes, from small to large-scale operations.



+400
cities



Curitiba
Innovation promotes appeal.

Brasília
Mass transportation.

Piracicaba
Success in fraud prevention.

Cascavel
Major capillarity in sales.

Campina Grande
The City of the Future: preventing fraud.

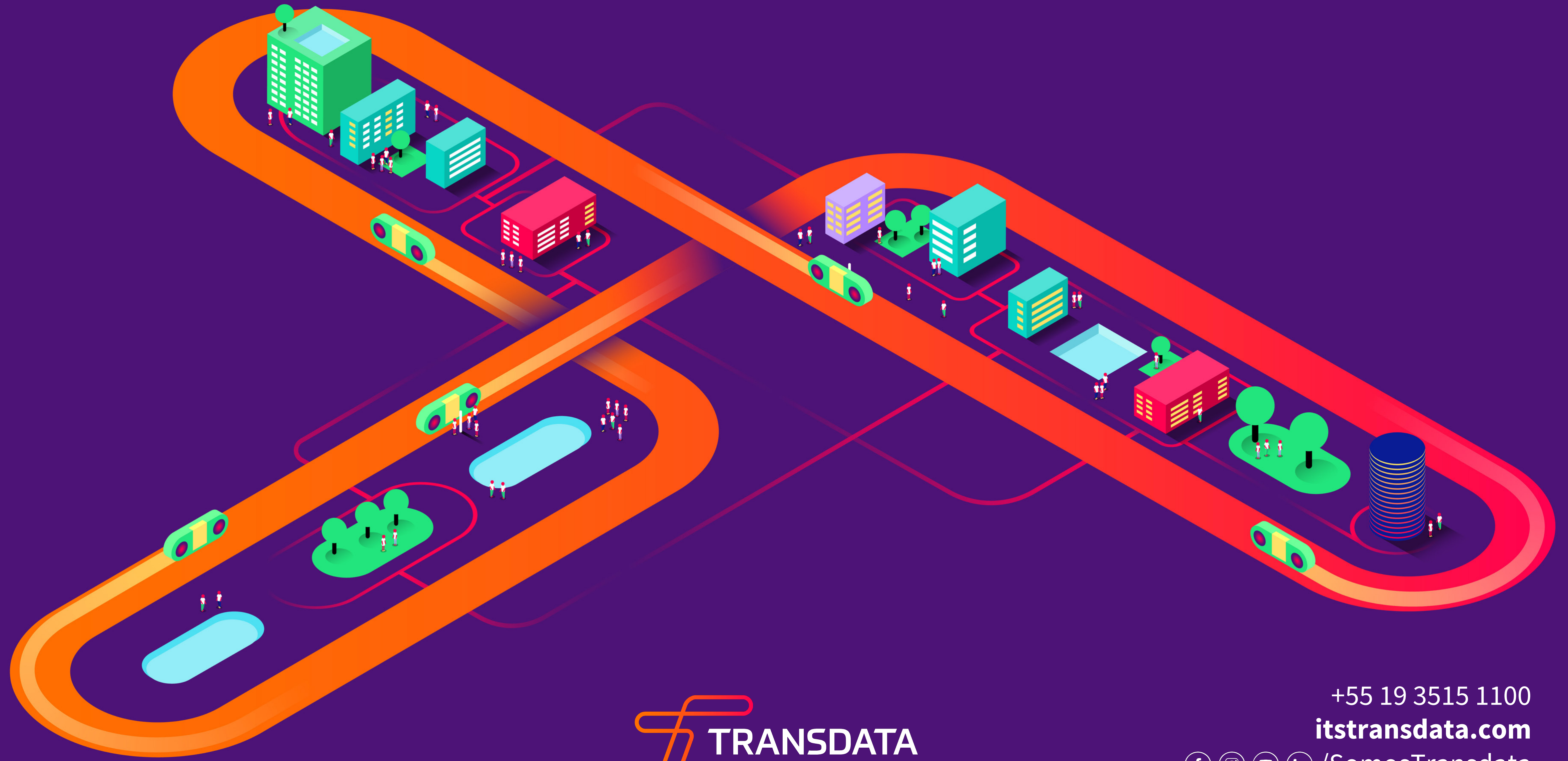
Pernambuco
Dynamic technology, operational intelligence.

Angola
Our story in Africa begins here.





**Let's work together
to expand mobility?**



 **TRANSDATA**
connecting paths

+55 19 3515 1100

itstransdata.com

    /SomosTransdata